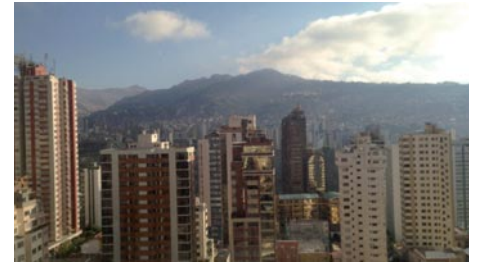


HOUSE 2016

30 April – 29 May

Gillian Wearing
Felicity Hammond
Thompson Hall
Chris Riddell



Front cover views

Courtesy of the artist and contributors

Column one, from top:

Noelle Noonan, Bweeng, Ireland
Paul Cox, Brighton, UK
Hussn Bibi, Hunza, Pakistan
Monica Zodwa Cheru, Harare, Zimbabwe
Heidi Hankniemi, New York, USA
Raj Yagnik, London, UK

Column two, from top:

Alalya Gloekler, Dushanbe, Tajikistan
Ebrahlim Ahmed Futaini Abuhadi, Sana'a, Yemen
John O'Donnell, Manhattan, USA
Diego Sanudo, Kemptown, Brighton, UK
Befekadue Beyene, Addis Ababa, Ethiopia
Albert Moya, New York, USA

Column three, from top:

Lisa James, Boston, USA
Fabrice Elikya Etudiant, Goma, Democratic Republic of Congo
Zohra Sultana, Karachi, Pakistan
Sandu Tarlev, Chisinau, Republic of Moldova
William Hanekom, Brighton, UK
Nick Ballon, La Paz, Bolivia

Acknowledgements

HOUSE Festival would like to thank its many supporters and partners:

John McPherson at Arts Council England; Anne Boddington and staff at University of Brighton, especially Alan Boldon, Joe Mansfield, Dave Cooper, Chris Williams and Michael Wilson; Andrew Comben, Beth Burgess and team at Brighton Festival; Paula Murray at Brighton and Hove City Council; Celia Davies, Juliette Buss and the team at Photoworks; Marc Steene, Jennifer Gilbert, Kate Davey and the team at Outside In; Lisa Brown, Sheryl Catto and Phoebe Barnicoat at ActionSpace; David Parker, Lisa Wolfe and Lizzie Banks at Carousel, Tim Brown at Cinecity; Lucy Castle at Jubilee Library; Charlotte Barrow at Visit Brighton; James Clewlow; Roger Browning at Victor Boorman; Karl Jones at Moshimo and Nick Tyson and Phil Blume at The Regency Town House.

The HOUSE 2016 artists:

Gillian Wearing, Felicity Hammond, Thompson Hall, Chris Riddell, Becky Bruzas, Matthew Hellett and Kalila Davids... and all the 700+ contributors from around the world who collaborated on Gillian Wearing's *Your Views*.

The HOUSE team:

Celia Davies Curator; Claire Wearn Festival Manager; Chloe Hoare Project Manager; Nicola Jeffs PR Consultant; Nione Meakin and Heidi Kuisma Digital Marketing; Fanny Lejeune and Hannah Harris Interns and Site Managers; Beth Troakes Site Manager; Rosie Powell Film-maker; Mark Scarett and Glen Walker Technical Support; George Mind Volunteer Coordinator; Claire Quigley Finance Officer; Fiona McTernan Advertising; Shaun Romain Evaluator; University of Brighton students: Ruby Bateman, Ellie Rose, Etta Lathan-Pons and Courtney Waring-Thomas - and all the volunteers, without whose involvement HOUSE could not take place.

The HOUSE Board of Trustees:

Bill Randall (Chair), Anne Boddington, Nicola Coleby, Simon Martin, Dino Skinner and Kerry Beattie.

The HOUSE commissioning panel: Celia Davies Director, Photoworks; Donna Close University of Brighton; Judy Stevens and Chris Lord Directors, HOUSE.

HOUSE has been developed and coordinated by Festival Directors Judy Stevens and Chris Lord.

HOUSE Festival Limited is a Registered Charity, Number: 1147339

HOUSE 2016 curated programme

Foreword	3
About HOUSE 2016	3
Gillian Wearing: A Room With Your Views	4
Felicity Hammond: Show Room: The Language of Living	6
Thompson Hall: Home Away from Home	7
Chris Riddell with Elizabeth Doak: Home Is Where The Heart Is	8
HOUSE 2016 Film Programme: Home Life	9
Talks and Events	10
Venue map	16

Visit the HOUSE hub

The HOUSE hub will be open
Wednesday's - Sundays
10am-5pm, throughout the
festival period at the University
of Brighton Foyer, Grand Parade.

You can find out information
about all HOUSE 2016
exhibitions, plus buy postcards
of all HOUSE 2016
commissioned artists' work.

Look out for Gillian Wearing's
limited edition concertina
postcards of 'Your Views'
and Chris Riddell's limited
edition print (right), drawn
especially for HOUSE 2016.

For more information:
www.housefestival.org



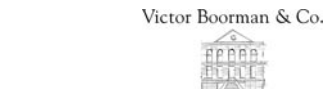
supported by



partners



sponsors



HOUSE 2016

Home | Sense of Place

30 April – 29 May

Foreword

This May, HOUSE makes connection with Brighton Festival's 50th anniversary theme of *Home*, and we are delighted to be co-commissioning Gillian Wearing with Brighton Festival, as key partners, to deliver a world premiere of Wearing's *A Room With Your Views*.

Partnership working is fundamental to HOUSE and we are very pleased to be developing our long-term collaboration with Outside In, co-commissioning Thompson Hall's new exhibition of work at The Regency Town House. Both Outside In and HOUSE see this as a significant development, providing a commissioning opportunity to an artist who may otherwise face barriers to the art world.

In further alliance, HOUSE 2016 and Photoworks are co-commissioning Felicity Hammond's new photographic sculptural installation, inaugurating the University of Brighton's new Edward Street Gallery - as well as co-producing a community drawing event, led by Children's Laureate, Chris Riddell and photographer Elizabeth Doak, in the city central Jubilee Library.

University of Brighton are major supporters of HOUSE 2016, offering their galleries both at Edward Street and Grand Parade. Additionally the University is hosting elements of the HOUSE 2016 film programme at the Sallis Benney Theatre. The programme of films, selected by Gillian Wearing around the theme of *Home Life*, also features short films from new HOUSE partners, Carousel, who support artists with learning disabilities to achieve their creative visions.

We would like to thank Arts Council England and Brighton & Hove City Council for their continued support. We are grateful to Film Hub South East and Visit Brighton and to all our partners and funders for their generous support.

Judy Stevens
Festival Director, HOUSE

About HOUSE 2016

We have taken this year's theme of *Home* to be about a sense of place; about the constructed private spaces we create in relation to public space and our relationship to the technological, physical and political landscapes that surround us.

In relation to our theme, we present three new artist commissions.

The HOUSE 2016 invited artist is Turner Prize Winner Gillian Wearing, OBE. For HOUSE, Wearing continues her exploration of public and private space in her worldwide open-call, to generate a collection of personal domestic vistas and private views from people's windows. With a compelling resonance, they connect people everywhere.

HOUSE also generated an open-submission for proposals from artists based in the South East. We awarded new commissions to photographer Felicity Hammond and to painter Thompson Hall.

For artist Thompson Hall, *Home* acts as a locator that can simultaneously make us feel secure and uneasy. His new series of richly coloured paintings reimagine his vision of Brighton and views from and near his home in London.

Meanwhile Felicity Hammond's photo-sculptural constructions appeal to our curiosity, by challenging the spaces created by the digitally-rendered architectural projections of modern living found in urban regeneration programmes.

Collectively, all three artists' works share a strong sense of the interior/exterior experience and the threshold between.

Throughout the festival there is an opportunity to attend artist's talks and enjoy the HOUSE film programme, which this year includes features selected by Gillian Wearing, and films from Carousel filmmakers. Families can get involved in an extraordinary community drawing/photography workshop with Children's Laureate Chris Riddell.

To find out more visit housefestival.org.

Celia Davies
HOUSE Curator and visual arts advisor

Gillian Wearing

A Room With Your Views

A HOUSE/Brighton Festival co-commission

This exhibition is presented in partnership with University of Brighton

World Premiere of the completed work

Turner Prize winner Gillian Wearing OBE is HOUSE 2016's Invited Artist and brings to Brighton & Hove *A Room With Your Views*, a collaborative film project capturing a snapshot of 'views' from homes across the world, connecting people and countries.

Through open submission and simple guidelines, Gillian Wearing invited people worldwide to contribute a short video clip of their curtains or blinds opening to reveal a view from their window. Like the curtains going up at the beginning of a stage play, each view is a pictorial unveiling of a landscape, cityscape or even a brick wall.

For this HOUSE/Brighton Festival co-commission, Wearing also invited Brighton and Hove residents to contribute their views, which are included in this exhibition alongside more than 700 contributions from 163 countries across the globe.

Gillian Wearing, comments, *"It feels personal in the way that each individual has approached the instructions to the film, and universal as it unites the world in the harmonious gesture of opening the curtains, blinds or shutters to give us a glimpse of their views"*.

The project is presented as a video installation and is the artist's first solo exhibition on the South Coast of England.

Gillian Wearing 'In Conversation' 23 May – see page 10

@HOUSE_Festival

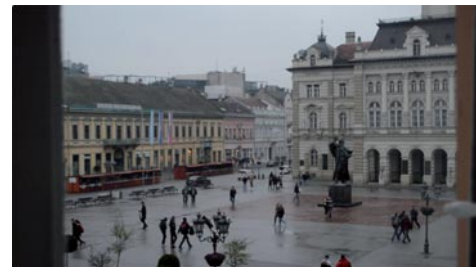
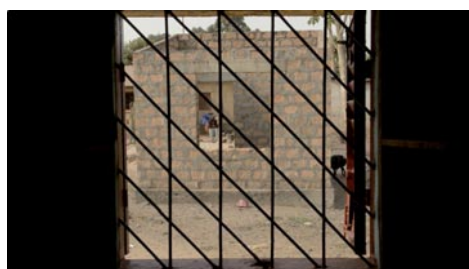
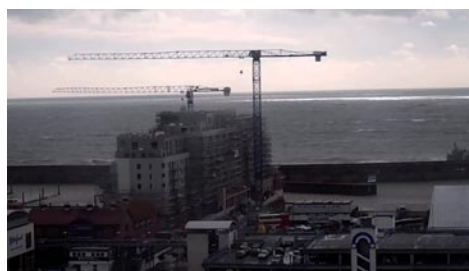
@brightfest

#gillianwearing

#yourviews

Gillian Wearing

As an artist, Gillian Wearing has been exploring our public personas and private lives for the past two decades. She describes her working method as 'editing life'. Using photography and video to record people's confessions, her work explores disparities between individual and collective experience, drawing on fly-on-the-wall documentaries, reality TV and techniques of theatre, to explore how we present ourselves to the world. Wearing won the 1997 Turner Prize, is an OBE and Royal Academician, and has exhibited extensively internationally. She is represented by Maureen Paley, London, Tanya Bonakdar, New York and Regen Projects, Los Angeles.

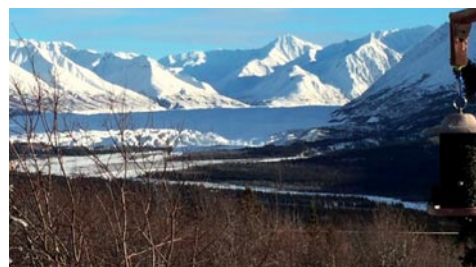
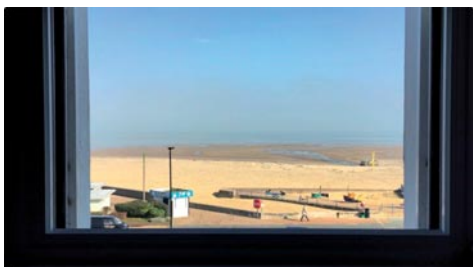


Anita Hammadache, Reghaia, Algeria
Ibrahim Mammadov, Baku, Azerbaijan
Rachel Jones, Djibouti City, Djibouti
Stephen Wrench, Brighton, UK
Jean Claude Moschetti, Kamsar, Guinea

Charles Cather, Novi Sad, Serbia
Ilia Diakatou, Nottingham, UK
Maksim Shved, Minsk, Belarus
Beatrice Haverich, Hove, UK
Simona Saggion, Bologna, Italy

Brighton Festival is England's leading annual curated multi-arts festival which takes place across the city for three weeks each May. This year marks the 50th Brighton Festival.
brightonfestival.org

University of
Brighton Galleries
58-67 Grand Parade
Brighton BN2 0JY
30 April-29 May
Mon-Sun: 10am-5pm
Late Night Thurs to 8pm
free



Chiku Lwambro, Gisenyi, Rwanda
Jan Frith, Isle of Wight, UK
Paula Jakobsson, Kusamo, Finland
Fiona Brailon, Grane, France
W Lance Dann, Burlington, Canada

Chris Jehle, San Francisco, USA.
jinane Saad, Bekaa Valley, Lebanon
Renise Peters, Pike Road, Alabama, USA
J  r  mie Magar, Tottenham, London
Fiona Brailon, Brussels, Belgium

Hana Sackler, Palermo, Sicily
Joseph Davis, Matanuska Glacier, Alaska
Sayyed Fadel, Manama, Bahrain
Olivier Moeckli, Kabul, Afghanistan
Kate Bracher, Ilford, Essex

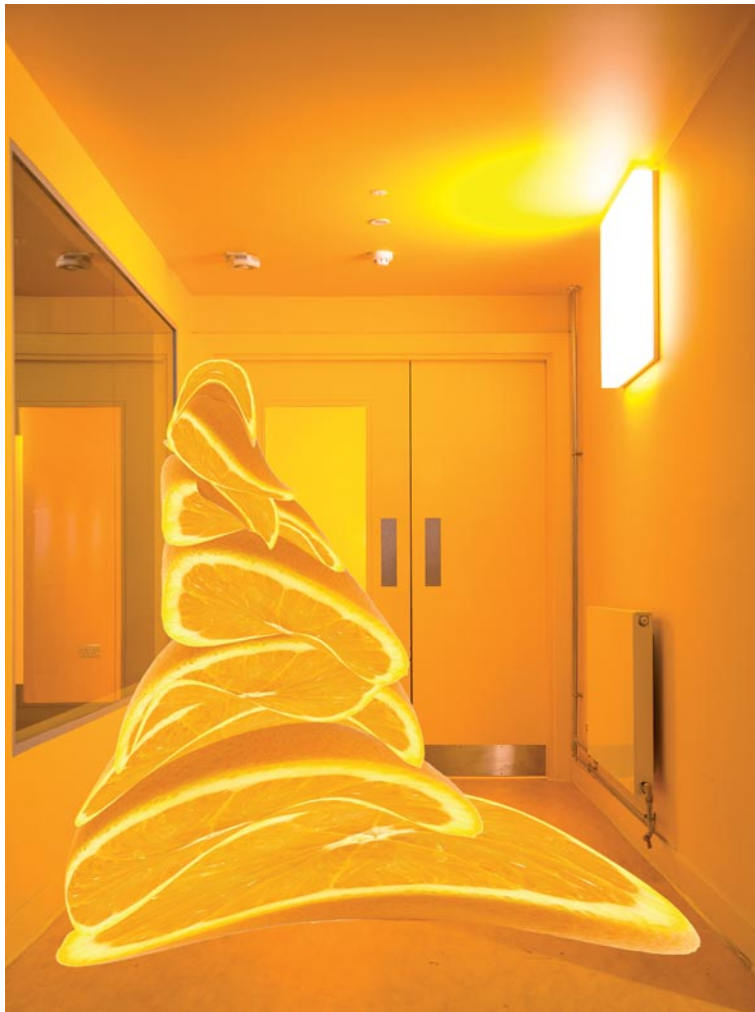
Images courtesy of the artist and contributors

Felicity Hammond

Show Room: The Language of Living

A HOUSE/Photoworks co-commission
Presented in partnership with University of Brighton

University of Brighton
154-155 Edward Street
Brighton BN2 0JG
also at:
Circus Street
Brighton BN2 9QF
30 April - 29 May
Mon – Sun: 10am – 5pm
Late Night Thurs to 8pm
free



Show Room: The Language of Living. Work in progress, courtesy of the artist

Felicity Hammond researches the simulated domestic settings and constructed worlds of the digital 'renders' that illustrate architects' proposals. She photographs digitally manipulated images from property developers' billboards and brochures and prints them directly onto moldable acrylic sheets, which are contorted into beautifully crafted, often large scale, sculptural objects.

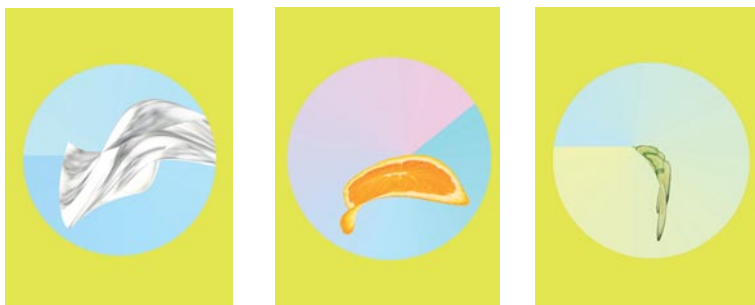
For this co-commission, Felicity will create a new showroom structure, responding to and exhibited within the University of Brighton's new home for photography and moving image, situated in a former corporate building. A companion installation is also shown on the hoarding of the former Circus Street Market site in the Circus Street development area. These site-specific installations draw attention to the distinct relationship between the architectural design of educational institutions, the historical value of the area they inhabit, and the future living spaces that will be born out of them. Looking at the role that education plays in urban regeneration, and the impact it has on the socio-economic landscape around it.

With these 'photo-sculptures', the artist turns virtual worlds into a visually curious physical space. Hovering between the real and imagined they create an environment that "sits somewhere between the archaic and futuristic, between luxury and decay."

Hammond explains, "My works challenge the rendered space of architectural luxury-living projections and I use new photography technologies to allow CGI images to enter the physical space. My photo-sculptural works are warped and distorted, adopting the properties of the degraded simulated image."

Artist talk 25 May – see page 10

@HOUSE_Festival
@photoworks_uk
@flisshammond
#felicityhammond



Work in progress, courtesy of the artist

Felicity Hammond

Felicity Hammond (b 1988, UK) graduated from the Royal College of Art in 2014. She has been a finalist and nominee for numerous awards including Magnum and Photo London Inaugural Photographer Award 2015, Saatchi New Sensations 2014 and Metro Imaging Printing Award 2014. Her work has been exhibited widely, in 2015 with South Kiosk Gallery at Unseen, Amsterdam; Saatchi Gallery, London and The Lowry, Manchester. She was showcased in the British Journal of Photography's International Photography Awards 2016.

Photoworks is the UK's leading national development agency for photography and is supported by Arts Council England. Photoworks curates, commissions and publishes new work and writing on photography. Major Photoworks productions include the Brighton Photo Biennial, the national Jerwood/Photoworks Awards and Photoworks Annual.

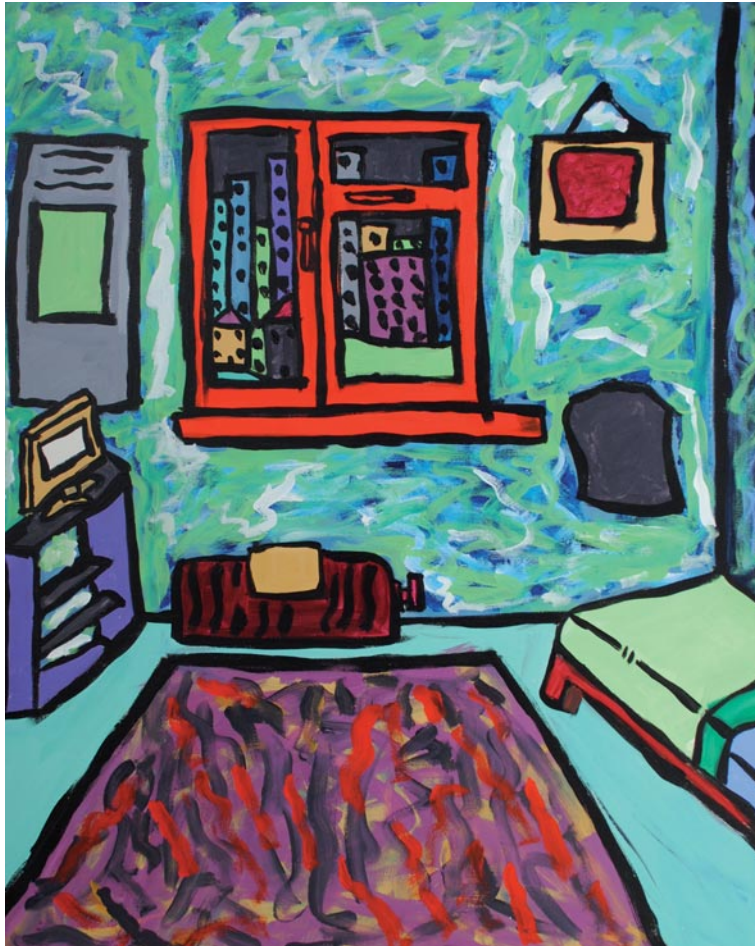
photoworks.org.uk

Thompson Hall

Home Away from Home

A HOUSE/Outside In co-commission

The Regency Town House
13 Brunswick Square
Hove BN3 1EH
30 April – 29 May
Thurs – Sun: 10am – 5pm
Bank Hol Mon 2 May: 10am – 5pm
Late Opening 27 May to 8pm
free



Images courtesy of the artist

Thompson Hall works intuitively in a variety of media, specialising in acrylic paint and pastel. His work begins with observational sketches from the urban landscape, providing the basis for artwork that depicts the world as seen by Thompson. He is concerned with colour, shape and texture over representation. Rather than an accurate re-creation, he prefers to convey a mood with carefully mixed colours chosen to capture a visual equivalent to a particular emotional or spiritual state rather than depicting true-to-life colours.

In this newly commissioned series, Thompson wants the paintings to: *“give the feeling of being somewhere else, besides your home, and the mixed emotions this creates”*.

Thompson has reimagined views from his home in North London and views from his visits to Brighton and the renowned Regency Town House where this exhibition is presented.

Thompson draws inspiration from the expressionistic paintings of Chaim Soutine, and like his fellow Camden artist Frank Auerbach attempts to resolve his personal experience of the world through painting. He is also influenced by contemporary culture, especially the dreamlike sequences of the 1981 film *An American Werewolf in London*.

Artist talk 22 May – see page 10

@HOUSE_Festival
#thompsonhall
#outsidein_uk
#actionspace
@THEActionSpace

Thompson Hall

Thompson Hall is a member of ActionSpace, a London-based organisation that supports artists with learning disabilities. Hall has recently exhibited “Postcards from Brighton” Brighton Dome (2013), “Postcards of Glasgow” Project Ability Gallery (2015) and as part of the group show “Shop of Curiosity” Geddes Gallery, London (2016). actionspace.org

Outside In supports artists to take part in events and opportunities to further their artistic development, and this HOUSE commission was open to artists with an online gallery on the Outside In website.

Founded by Pallant House Gallery, Chichester, in 2006, Outside In provides a platform for artists who see themselves as facing barriers to the art world due to health, disability, social circumstance or isolation. The goal of the project is to create a fairer art world which rejects traditional values and institutional judgements about whose work can and should be displayed.

outsidein.org.uk

Chris Riddell with Elizabeth Doak

The Children's Library
Jubilee Library
Jubilee Street
Brighton BN1 1GE
Saturday 14 May
11.00am - 4.30pm
free - please book

Home Is Where The Heart Is

A HOUSE/Photoworks co-production
Family Workshop

Children's Laureate and illustrator Chris Riddell leads a free community drawing and photography event for children and families at Brighton & Hove's Jubilee Library, in a co-production from HOUSE 2016 and Photoworks.

Led by Chris Riddell, *Home Is Where The Heart Is* invites workshop participants to create a drawing inspired by the festival themes of *Home* and *Sense of Place*. Combining drawing and photography, the workshop also offers participants the opportunity of working with photographer Elizabeth Doak to make photographic portraits of themselves wearing their drawing on their heart.

The resulting works will be displayed as installations in the foyers of MyHotel Brighton and the University of Brighton, Grand Parade until the Festival closes, and then at Jubilee Library until the end of June.

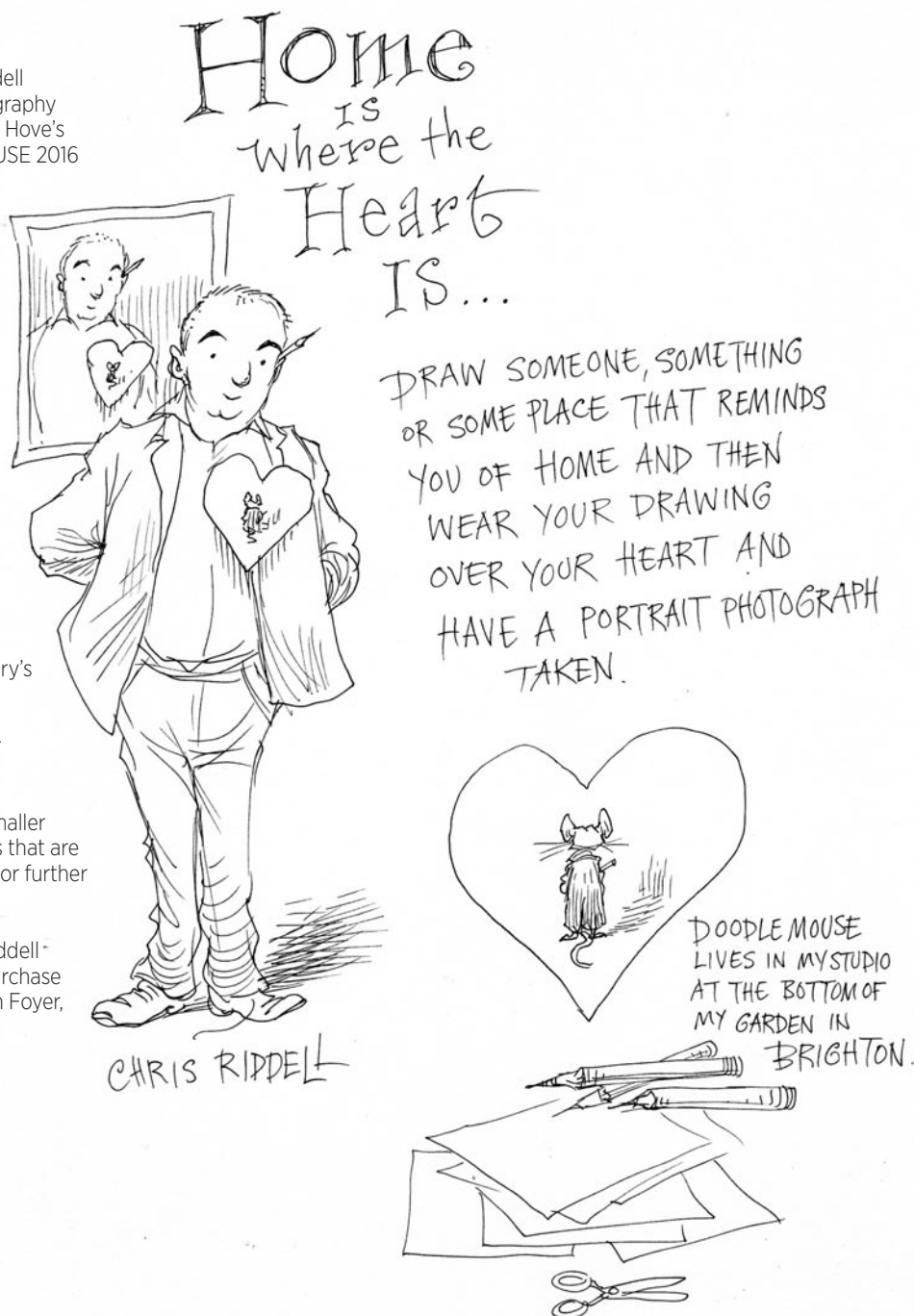
The workshop will form part of Jubilee Library's special day of family activities.

This event is **free**, but please see page 10 for booking details, as spaces are limited.

HOUSE hopes to extend the workshop to smaller libraries on the outskirts of the city, in places that are not often reached by other festival events. For further information please see: housefestival.org

A limited edition print, designed by Chris Riddell - especially for HOUSE 2016, is available to purchase from the HOUSE Hub: University of Brighton Foyer, Grand Parade.

@HOUSE_Festival
@chrisriddell50
@BHLibraries



Chris Riddell

Chris Riddell, the 2015-2017 UK Children's Laureate, is an accomplished artist and the political cartoonist for the Observer. He has enjoyed great acclaim for his books for children and has won a number of major prizes. Chris lives in Brighton with his family.

Elizabeth Doak

Elizabeth Doak is a freelance photographer and artist educator currently working for the National Portrait Gallery, Towner, Eastbourne, in local schools and on various independent projects.

**Exhibition of the workshop
photographic installation**
Foyer of MyHotel Brighton
17 Jubilee Street
Brighton BN1 1GE
16 - 29 May

**Exhibition of the
workshop drawings**
University of Brighton Foyer
58-67 Grand Parade
Brighton BN2 0JY
16 - 29 May

Exhibitions extended
Jubilee Library
Jubilee Street
Brighton BN1 1GE
31 May - end June



Home Life

HOUSE 2016 Film Programme

Selected by Gillian Wearing and Carousel Artists

For HOUSE 2016, Invited Artist Gillian Wearing has selected a programme of films based around the theme of *Home Life* and which make connections with her work.

The four films selected all expose aspects of home and home life, featuring explorations of dwelling places where something is revealed. Connecting thematically to aspects of Wearing's new commission *A Room With Your Views*, the films bring into focus homes from different areas of the world. By revealing views from the home, the films consider concepts of home both utopian and dystopian, as well as exploring the relationship between the inside and outside; this counter-positioning of interior and exterior being a thematic integral to all four films as well as to Wearing's own work.

On 23rd May, Gillian Wearing and Celia Davies, HOUSE 2016 Curator, will hold an *'In Conversation'*, exploring Wearing's choice of films and relationship with her own work.



Accompanying the programme of feature films is a series of shorts that make connections with Wearing's selection, curated by Becky Bruzas and Matthew Hellett of the Oska Bright Film Festival.

Becky says: *'The view from my window is a vibrant urban landscape, but some learning disabled people are not so lucky. The films we've selected for HOUSE reflect on how our home lives affect the way we relate to people and places and act on our imagination. We hope you enjoy this window into our world.'*

For details and timings see page 10 ➤

Oska Bright has been championing learning disabled filmmakers for over 14 years at its Festival and on tour. It is a division of Carousel, an arts company that supports learning disabled artists to develop and manage their creative lives, challenging expectations of what great art is and who can create it.

www.carousel.org.uk

Film programme

Monday 23 May 6.30

Sallis Benney Theatre
University of Brighton 58-67
Grand Parade
Brighton BN2 0JY

Pre screening:

'In Conversation' Gillian Wearing with Celia Davies, HOUSE curator

Carousel Short:

Goran

Goran Gostojić and Roberto Santaguida, Canada, 2014, 10min

This short film takes an intimate look at the life of Goran Gostojić, a man with learning disabilities from Novi Sad, the second largest city in Serbia - offering a window into his inner life as he discusses his sense of the city and of community, and his hopes of living a regular life despite his differences.

Feature:

Christine

Alan Clarke, UK, 1987, 52 min



CHRISTINE follows a teenage girl as she drifts from house to house in a leafy West London suburb, servicing the needs of fellow school-age heroin addicts. The film is an uncompromising portrayal of a day in the life of a teenage drug addict. The groundbreaking director is known for his radical, and influential work for film and television.

£7 (concessions £6)

Group tickets (of over 15 people) £4 pp

Tuesday 24 May 8pm

Duke of York's Picture House
Preston Road
Brighton BN1 4NA

Carousel Short:

A Reason to Stay

Adiya imri Orr, Eldar Yusupov, Rona Feldman, Israel, 2011, 15min

Life for Tomer in the plant-filled flat he shares with his mother is tough, especially with the very attractive Dana living down the corridor. This taut drama explores the tensions in a mother/son relationship

Feature:

Jeanne Dielman, 23, quai du Commerce, 108 Bruxelles

Chantal Akerman, BEL/FR 1975, 201min

Jeanne Dielman, the widowed mother of a teenage son, ekes out a drab, repetitive existence in her tiny Brussels apartment. Jeanne's days are divided between humdrum domestic chores and her job as an occasional prostitute. Akerman was just 25 when she directed the film making it all the more remarkable.

£6 (concessions £5)

Group tickets (of over 15 people) £4 pp.

Sunday 29 May 2pm

Sallis Benney Theatre

Pre screening:

'In Conversation' Carousel Artists Becky Bruzas and Matthew Hellett

Carousel Short:

The Sea Reminds Me

Ray Jacobs, Jonathan Tritton, Mervyn Bradley, UK, 2013, 11min

The landscape of coastal Wales is central to this evocative and elegantly paced dance-film about memory and loss.

Feature:

Mirror

Andrei Tarkovsky, Russia, 1975, 108 min



MIRROR is Andrei Tarkovsky's most autobiographical work in which he reflects upon his own childhood and the destiny of the Russian people. The film's many layers intertwine real life and family relationships with memories of childhood, dreams and nightmares.

£6 (concessions £5)

Group tickets (of over 15 people) £4 pp.

Sunday 29 May 5pm

Sallis Benney Theatre

Carousel Short:

Mitra Shahriar Pourseyedian

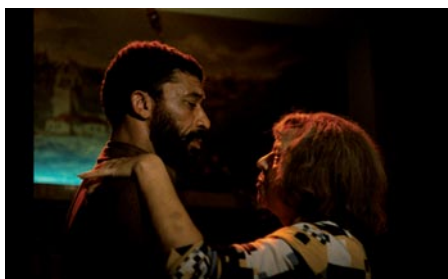
Mitra Farazande, Jamile Farazande, Iran, 2011, 9min

A glimpse into the lives of two extraordinary sisters, living on the coast in Iran, dependent on each other for their daily existence, their inner strength and happiness. Mitra is a hauntingly beautiful documentary, full of poetry and celebrating the resilience of the human spirit.

Feature:

Ali - Fear Eats The Soul

Rainer Werner Fassbinder, GER 1974, 94 min



A tentative love affair between a German woman in her mid-sixties and a much younger Moroccan immigrant worker threatens to buckle under the class tensions and racism exposed by their relationship. Fassbinder's classic is a beautifully performed dissection of intolerance and hypocrisy.

Post screening discussion and Q&A

£6 (concessions £5)

Group tickets (of over 15 people) £4 pp.

Booking: housefestival.org

Talks and Events

Saturday 14 May 11am – 4.30pm

Community Drawing Workshop Chris Riddell with Elizabeth Doak

The Children's Library
Jubilee Library
Jubilee Street
Brighton BN1 1GE

Up to 20 places available per session. The workshop is open to those aged 5+ and their families, but most suitable for 7+. Children must be accompanied by an adult. Drop in places may be available, but please book to avoid disappointment.

To reserve a place please visit

Jubilee Children's Library

or call 01273 290800.

Participants will be offered a 30 minute slot between 11am and 4.30pm.

For more information see:

www.citylibraries.info

and the Events page of the HOUSE website:

www.housefestival.org

Free

Sunday 22 May 2pm



Thompson Hall Artist Talk

The Old Market
11a Upper Market Street
Hove BN3 1AS

Artist talk with HOUSE Curator, Celia Davies, followed by a visit to the artist's exhibition at The Regency Town House and picnic in Brunswick Square gardens (weather permitting).

Free (bring your own snacks for a picnic)

Wednesday 25 May 6.30pm

Felicity Hammond Artist Talk

University of Brighton
154-155 Edward Street
Brighton BN2 0JG

Artist talk with HOUSE Curator, Celia Davies, followed by a walk to the artist's related work in Circus Street.

Free

Brighton Festival 7–29 May 2016

Booking: brightonfestival.org or call 01273 709709

Laurie Anderson

Slideshow

World Premiere & Brighton Festival Exclusive

Wed 18 May, 7.30pm

Brighton Dome Concert Hall

£10, £15, £18.50, £22.50 Under 26s £15, Festival standby £10

Brighton Festival Guest Director Laurie Anderson is one of America's most daring creative pioneers. Renowned for her inventive use of technology, her eclectic, multidisciplinary career has spanned the worlds of art, theatre and experimental music. Slideshow is a performance monologue about place and places: travel through her collection of adventure stories about love, cities, diners, Mars, how we see, living by rivers, Dollywood and her home town.



Image © Tom Oldham



Lou Reed Drones

UK Premiere

Fri 13 – Tue 17 May, 12pm – 5pm

The Spire, St Mark's Chapel

FREE

'I feel healed in the drones,' Lou Reed once said whilst on tour in Sydney. This installation of Reed's guitars and amps in feedback mode is a visceral experience: 24 strings set in motion from the push of magnetically driven cones, 360 partial harmonics colliding against each other, cascading, uniting, elevating, rising up like New York skyscrapers.



Metahaven

The Sprawl

UK Premiere

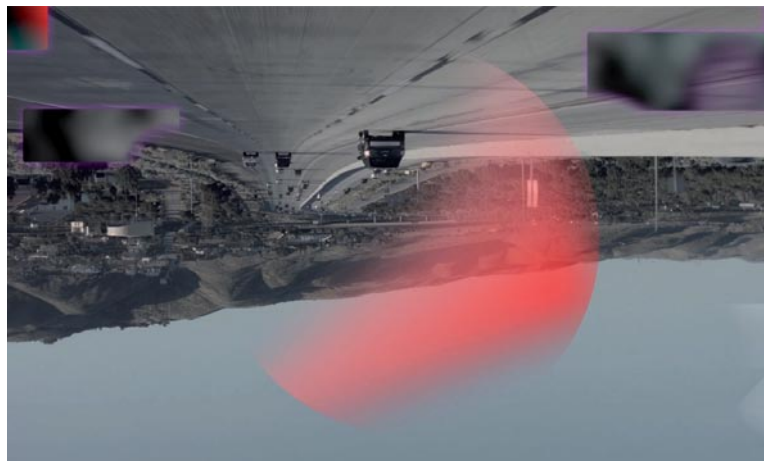
Co-commissioned by Brighton Festival with Lighthouse and The Space

Sat 7 – Sun 29 May, 11am – 6pm

Lighthouse

FREE

Created by award-winning Dutch studio Metahaven, The Sprawl argues that the internet has become a disruptive geopolitical super weapon. Multiple screens present re-imagined, popular YouTube memes, including state-influenced fan art and news clips, juxtaposed and overlaid with original footage and graphics. A paranoid trip into reality turned on its head.



Ron Haselden

Luminary

Co-produced by Brighton Festival and Fabrica

Sat 7 – Sun 29 May, 12pm – 7pm

Fabrica

FREE

This series of beautiful LED light-drawings by respected British artist Ron Haselden takes its inspiration from sketches by young children, older people and a love for the 'untutored hand'. The LED rope lights range in scale from a large walk-through installation at Fabrica, to intimate portraits, shining out from homes across the city.



'Technology and the Evolution of the Artist's Book'

Curator: Maddy Rosenberg

Exhibition Design: Anna Jones and Patrick Burnier/Curious Space

Phoenix Brighton
10 – 14 Waterloo Place
Brighton BN2 9NB
01273 603700
info@phoenixbrighton.org
30 April – 12 June
Weds – Sun: 11 am – 5 pm
FREE

An exhibition of boundary-breaking bookwork within a stunning, specially designed space. The exhibition features the work of notable contemporary artists from across the world who work with the book as an art form. For some of these artists, the material and sensory nature of the book is primary; for others, the image and the text carry equal weight. As a whole, the work in this exhibition embodies a fresh, experimental and daring approach to the wide ranging field of artist's books, and also reveals the surprising and imaginative ways in which artists utilise technologies, old and new, in the process of realising their vision.

Exhibitors include: Book Art Museum (Lodz, Poland), Erik Demaine and Martin Demaine, Tina Flau, Art Hazelwood, Emma Hill Fine Art, Valerie Huhn, Kahn + Selesnick, Eunkang Koh, Liberature (Katarzyna Bazarnik and Zenon Fajfer), Despo Magoni, Max Marek, Heidi Neilson, Geraldine Ondrizek, Marianne R. Petit, Maddy Rosenberg, Susan Rostow, Buzz Spector, Sarah Stengle, and Mary Ting

South Gallery Exhibition

'Stories About Stories'

Artists from locally-based groups Fabula, Sussex Book Art Collective and Phoenix Brighton present new work that reveals the rich and diverse world of the artist's book and the associated fields of illustration, narrative and animation.

Artist's Books Weekend

Round Table

A panel of experts will explore artists' books and their significance within the world of contemporary fine art.

Saturday, 14 May, 1 - 5 pm, £5, register at www.phoenixbrighton.org

Connect & Collect

Workshops, talks, exhibitions and activities to inspire and inform book lovers

Sunday, 15 May, 11 am - 5 pm, free, drop in any time

Please visit the website for full details of exhibitions, workshops and events. www.phoenixbrighton.org



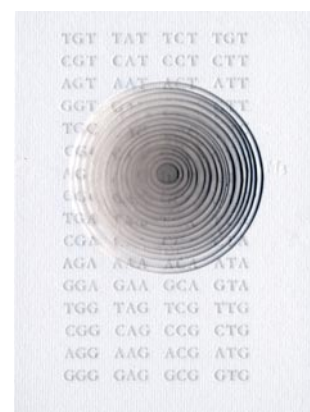
Eunkang Koh



Art Hazelwood



Sarah Stengle



Geraldine Ondrizek



Maddy Rosenberg

The Royal Pavilion & Museums

Discover a whole new world of vibrant exhibitions and displays at our historic venues across Brighton & Hove this season.



Papa Petit of Zmanjings, shot in Nairobi by Sarah Marie Waswa

Fashion Cites Africa

Brighton Museum & Art Gallery

Fashion Cites Africa opens at Brighton Museum on the 30 April and is the first major UK exhibition dedicated to contemporary African fashion.

Discover the global influence of African fashion through the looks and words of individuals—including designers, stylists, photographers and bloggers. Developed with African fashion specialists Hannah Azieb Pool and Helen Jennings, this exhibition includes a wide range of apparel alongside images, film and sound evoking the drama, creativity and dynamism of four African cities, Casablanca, Lagos, Nigeria and Nairobi.

30 April 2016 to 8 January 2017, Admission payable, members free



Doreen Valiente c.Doreen Valiente Foundation

Folklore, Magic and Mysteries

Modern Witchcraft and Folk Culture in Britain

Preston Manor

A unique display of artefacts, manuscripts and documents from the Doreen Valiente Foundation. In 2013 Doreen made posthumous history by being the first witch to be awarded a blue plaque on her home in Brighton to commemorate her life and honour her achievements.

2 April 2016 to 30 September 2016, Admission payable, members free

Please visit brightonmuseums.org.uk for more details



Ditchling Museum of Art + Craft

"This then is the scribe's direct purpose: the making of useful things legibly beautiful."

Edward Johnston

Ditchling is no ordinary village; it has been home to some of Britain's most innovative artists and has a legacy of international importance. The award-winning Ditchling Museum of Art + Craft tells their story and houses a permanent collection of work by Eric Gill, Frank Brangwyn, David Jones, Ethel Mairet, Charles Knight and Edward Johnston, as well as running a regular programme of workshops and talks. Nestled in the South Downs, just a few miles north of Brighton, the museum reopened to critical acclaim in autumn 2013 following a major redevelopment.

This spring and summer the museum celebrates the centenary of one of Ditchling's well-known residents; **Underground: 100 Years of Edward Johnston's Lettering for London** shows Johnston as a true man of letters, resurrecting and redefining calligraphy in the West, and designing an elegant typeface for London Underground. Sitting comfortably alongside this is work by a current letter artist; **Bob & Roberta Smith's** new display for Ditchling Museum of Art + Craft is a mini retrospective of the artist's sign-written work combined with new pieces developed after his visit to the museum. An exciting new programme **The Village of Type** will be delving even further into the world of letters and print with exhibitions, workshops, lectures, residencies, events and live-printing activities in Ditchling, Brighton and London. To complete the programme, **Signs of Ditchling** brings together an eclectic collection of signs from the history of the village to explore the tradition of signwriting which surrounded Johnston when he created the sans serif lettering for London's transport network.

Ditchling Museum of Art + Craft, Lodge Hill Lane, Ditchling, East Sussex BN6 8SP

01273 844 744

enquiries@ditchlingmuseumartcraft.org.uk

www.ditchlingmuseumartcraft.org.uk

ADVERTISEMENT

The Lightbox



The Lightbox gallery and museum in Woking is one of the leading arts venues in the South East. Three stunning galleries host a huge range of exhibitions, changing regularly. These include contemporary art from local and nationally famous artists, and loans from major museums and galleries in the UK and overseas. The building is home to 'Woking's Story', an interactive museum of the town's history, and you can also enjoy coffee, cake or lunch in our picturesque canalside Café or browse for a memento of your visit in our Shop.



The Lightbox is showing **John Constable: Observing the Weather** until 8 May 2016, an exhibition which provides an in-depth examination of Constable's fascination with weather and its ability to change a landscape. Following this will be **The Road to Abstraction: The Ingram Collection** 21 May – 24 July 2016 which will explore the evolution of abstract art, then in the summer the major retrospective **The Story of British Comics So Far: Cor! By Gum! Zarjaz!** 6 August - 31 December 2016 will take visitors on a journey through the history of sequential art.

The Lightbox is also much more than just a gallery with a packed programme of events that includes art workshops for people of all ages, engaging talks, relaxing yoga sessions and fun events like our annual Vintage Fair and monthly Joke in the Box comedy nights.

General admission to The Lightbox is **free**.

Entrance to Main and Upper Gallery Exhibitions requires the purchase of a **£5 Annual Pass**. Under 18s are free.

The Lightbox, Chobham Road, Woking, Surrey GU21 4AA

Tel: 01483 737800

www.thelightbox.org.uk



Jerwood Gallery



Head east from Brighton to Hastings and discover Jerwood Gallery, home of the Jerwood Collection of 20th and 21st century art, and a regularly changing programme of exhibitions.

"Jerwood Gallery, nestled on a working fishing beach in Hastings Old Town, offers a uniquely British experience."

Art of England

The Jerwood Collection's focus is on art from the First World War to the 1960s. Highlights include paintings by Sir Stanley Spencer, LS Lowry, Walter Sickert and Maggi Hambling.

Our diverse exhibitions showcase the very best in modern and contemporary British art. This year's exhibitions are:

John Bratby: Everything but the Kitchen Sink, including the Kitchen Sink until 17 April

In Focus: John Piper - An Eye for the Modern until 8 May 2016

Prunella Clough: Unknown Countries 23 April – 6 July 2016

The Painter Behind the Canvas 10 May – 9 October 2016

Bitten by Picasso 6 July – 9 October 2016

Inselaffe: Marcus Harvey 16 July – 16 October 2016, part of Hastings' Root 1066 Festival

In Focus: Stanley Spencer - A Panorama of Life 15 October 2016 – 8 January 2017

Century: 100 works of Modern British Art from the Ingram and Jerwood Collections 22 October 2016 – 8 January 2017

Jerwood Gallery is part of the Coastal Cultural Trail, joining it with De La Warr Pavilion and Townner across 25 miles of stunning coastline.
coastalculturaltrail.com

Jerwood Gallery, Rock-a-Nore Road, Hastings, TN34 3DW

01424 728377

jerwoodgallery.org



Melanie Manchot, *Out of Bounds*, 2016.
2 channel video installation, colour, sound



Image courtesy of Avant Commercial

Towner Gallery

Towner is an award-winning gallery showcasing national and international artists and presenting works from our acclaimed collection. We place learning and a commitment to access at the very heart of everything we do, building on the original vision of the gallery's philanthropic founder to create 'an art gallery for the people'.

Towner's collection is best known for its modern British art, including the largest body of Eric Ravilious works (1903-1942). We hold sizeable collections of works by artists such as Christopher Wood, Edward Bawden, Paul Nash, Alfred Wallis and Duncan Grant, as well as contemporary artists such as Olafur Eliasson, Wolfgang Tillmans, Tacita Dean and Grayson Perry.

'One of the most creative and brilliantly run institutions in visual arts anywhere'

Laura Cumming, *The Observer*

townereastbourne.org.uk

Here's a preview of what's on offer in 2016

Recording Britain 6 February – 26 June

Walking the Line: Annual Schools Exhibition 2016 24 March – 5 June

Melanie Manchot: People Places Propositions 16 April – 10 July

David Bomberg: A Sense of Place 9 July – 11 September

East Sussex Open 23 July – 25 September

Towards Night curated by Tom Hammick 24 September – 22 January

The Figure in Painting 8 October – 8 January

Towner is part of the Coastal Cultural Trail, which joins Jerwood Gallery, De La Warr Pavilion and Towner – three award winning galleries across 20 miles of inspiring coastline. Come to East Sussex for a weekend and enjoy the arts and culture, stunning beaches and countryside and fine food. coastalculturetrail.com

Towner, Devonshire Park, College Road, Eastbourne BN21 4JJ

Tues – Sun and Bank Holidays 10am – 5pm

Free Entry

De La Warr Pavilion

Willem Sandberg: from type to image

Curated by Carolien Glazenburg, Stedelijk Museum, Amsterdam, in collaboration with Fraser Muggeridge and De La Warr Pavilion.

30 April to 4 September

Willem Sandberg: from type to image is the first UK survey of this icon of graphic design. Sandberg was director of the Stedelijk Museum in Amsterdam from 1945 to 1963 where he championed new artists, developed one of the most important collections of modern art in Europe and implemented radical transformations of the Museum's environment. He designed hundreds of posters, catalogues and cards for the Museum's exhibitions and this exhibition will comprise a selection of this work.

Richard Forster: Levittown

Until 5 June

This exhibition of drawings on paper is based on Forster's 18 month study of Levittown, the 1947 suburban housing project in New York state, USA and questions how an architectural environment impacts on developing culture and sense of memory.

Central to the exhibition is an installation of four-part neon signs partially inspired by the folk song 'Little Boxes' made famous by Peter Seeger in 1963. The song satirised suburban housing projects "little boxes" of different colours "all made out of ticky-tacky", and which "all look just the same."

Visit Jerwood Gallery Hastings, De La Warr Pavilion and Towner Eastbourne and everything in between on the Coastal Culture Trail www.coastalculturetrail.com

www.dlwp.com

Bexhill on Sea

Admission Free

9 Years Stedelijk Museum 1945-54 exhibition catalogue, 1954.
Courtesy Stedelijk Museum Amsterdam



Richard Forster: Levittown

